

PROJECT UPDATES AND CURRENT ROAD CLOSURE LOCATION INFORMATION
 To receive project update text messages
 Text **WCHDProjectUpdate** to **855-701-1414**

CONTACT INFORMATION

Winona County
 Main Office - (507) 457-8840

Project Inspector

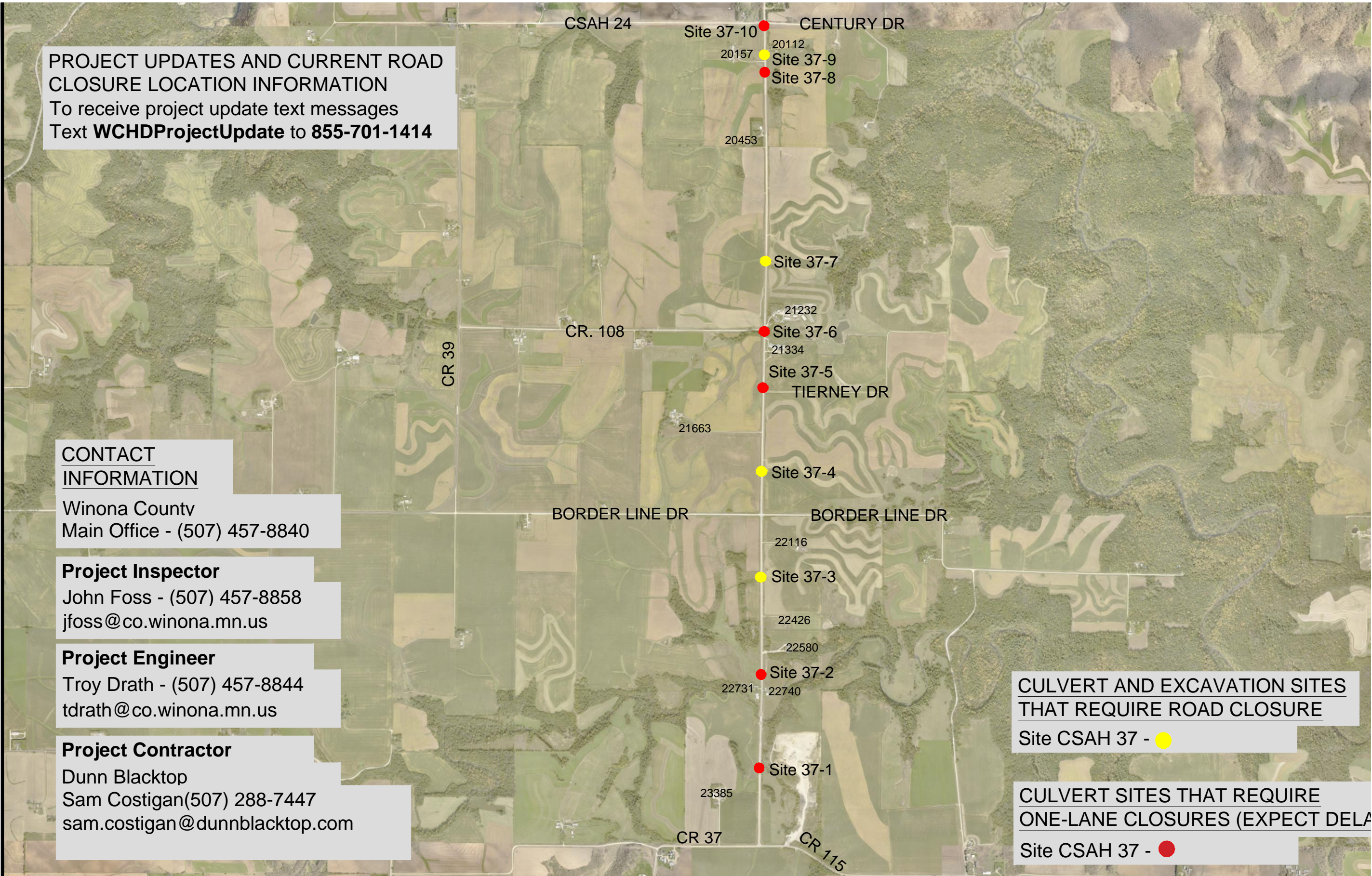
John Foss - (507) 457-8858
 jfoss@co.winona.mn.us

Project Engineer

Troy Drath - (507) 457-8844
 tdrath@co.winona.mn.us

Project Contractor

Dunn Blacktop
 Sam Costigan(507) 288-7447
 sam.costigan@dunnblacktop.com



CULVERT AND EXCAVATION SITES THAT REQUIRE ROAD CLOSURE

Site CSAH 37 - ●

CULVERT SITES THAT REQUIRE ONE-LANE CLOSURES (EXPECT DELAY)

Site CSAH 37 - ●

CSAH 37 RECLAMATION AND CULVERT REPLACEMENT



CP 2106	SAP # 085-637-029
DATE 04/07/2021	DRAWN BY: TJL
DRAWING SCALE: NA	
FILE NAME-	

SITE MAP